

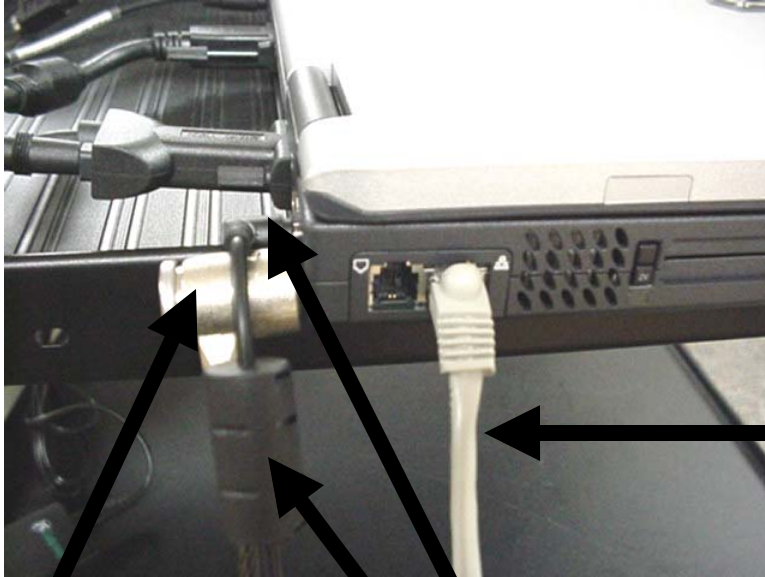
SmartBoard Setup and Usage

1. The first step is to locate all the cables and equipment. You will need:
 - a. Laptop computer for the SmartBoard
 - b. Epson Projector
 - c. SmartBoard (this looks like a portable screen or blackboard of wheels)
 - d. Power supply strip
 - e. Power supply for laptop
 - f. Cables: network, Epson, SmartBoard
 - g. SmartBoard eraser and SmartBoard color stylus pens.
 - h. Projector cart for Epson and Laptop.



Are you confused yet? Look at the next page for how to connect all this great stuff.

2. Carefully connect cables to the laptop as indicated.



On the side of the laptop, connect the network cable. Plug the other end into the network plug in your room

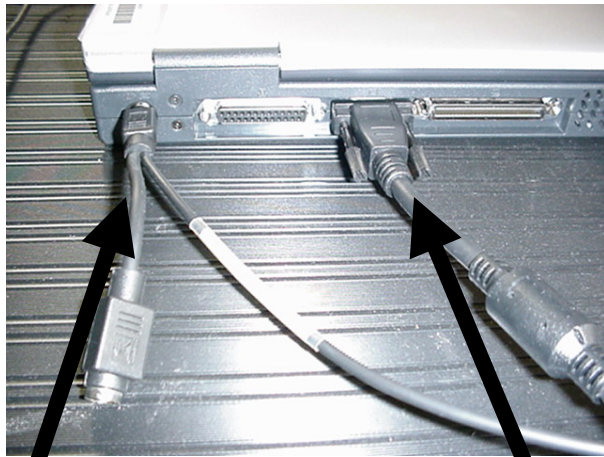
This is the laptop lock. This is the power supply connection for the laptop.



Cables for network, laptop lock and power supply.

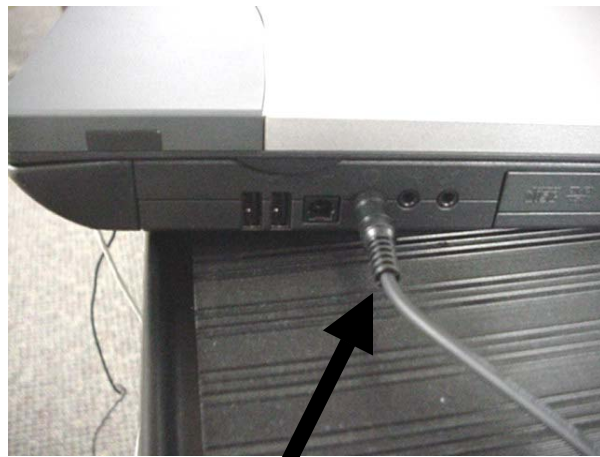
Cable for SmartBoard

See where this attaches in next photo



Other end of SmartBoard cable

Epson cable

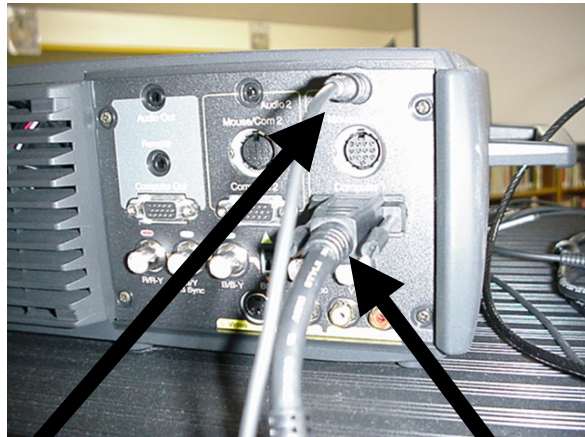


Sound cable to Epson

3. Connect cables to the Epson Projector



Electrical plug



Sound cable

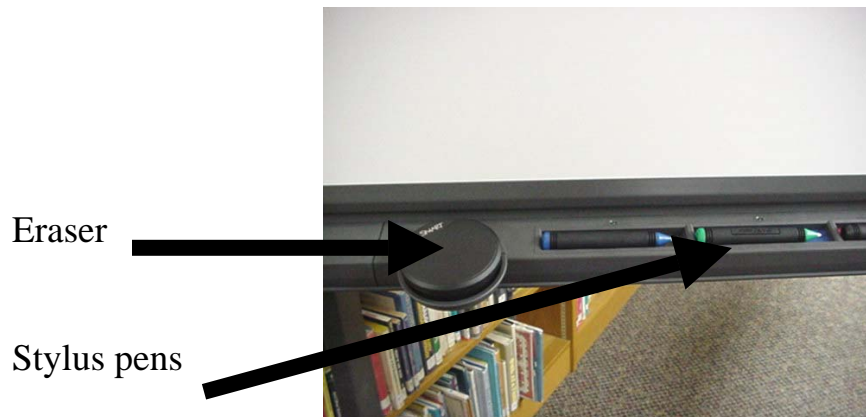
Projector cable to laptop

4. Connect laptop to the SmartBoard

Attach cable to SmartBoard on the lower right side



5. Place the SmartBoard eraser and the special stylus pens on the SmartBoard tray located near the bottom of the SmartBoard. All must be in place to get the SmartBoard to work correctly.

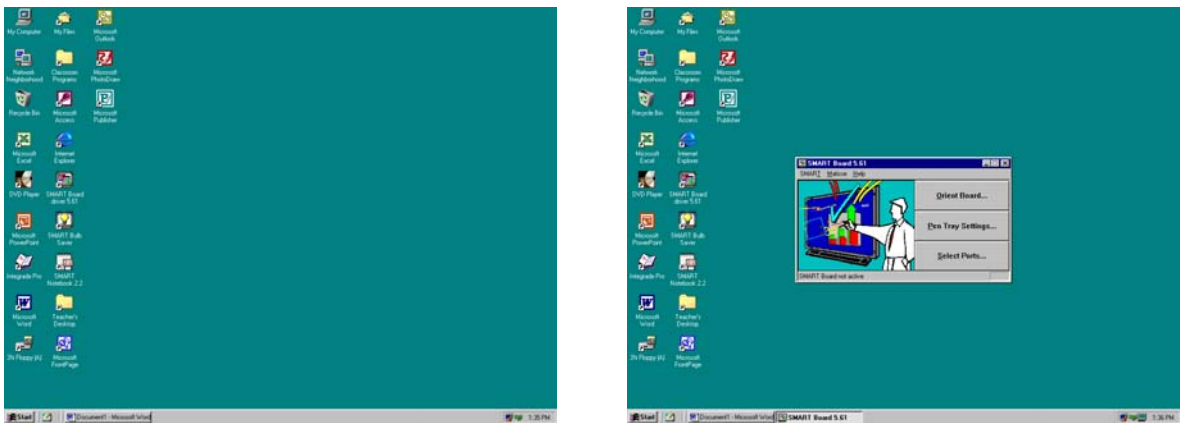


6. Plug the power cable for the laptop into the power strip. Plug the Epson Projector into the power strip. Connect the network cable from the laptop computer to the network access on the wall. You may have done this when attaching the cables to the laptop and Epson earlier.
7. It is now time to turn on (boot) the laptop. When the login window appears, turn the power on the Epson projector.



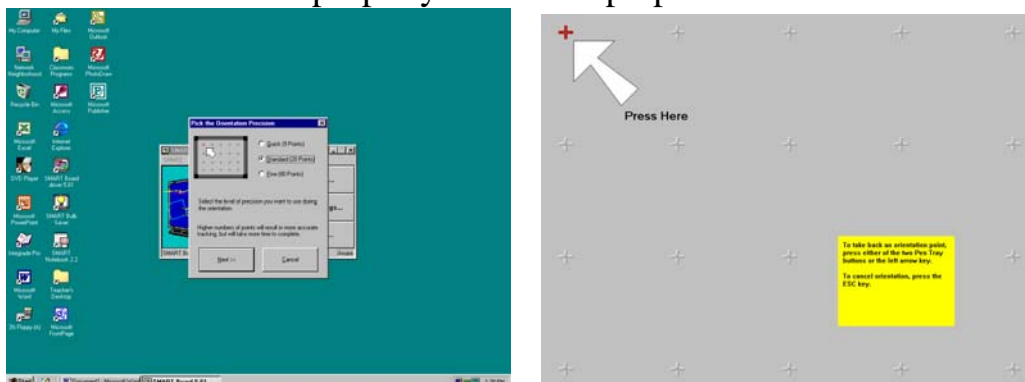
8. Continue to login on the laptop after the Epson projector is turned on.
9. A message may appear about "Netmeeting 3.0 has been removed". Click "NO".

10. When the desktop for the computer appears, look for an icon for SmartBoard driver 5.61.



From the desktop, click on the icon for the SmartBoard driver 5.61. It will open the Orient Board window. Click on Orient Board. A green light should appear on the SmartBoard in the lower right corner near the plug. This indicates that the laptop and SmartBoard are starting to communicate with each other.

11. The Orient the Board step is very important so the SmartBoard will communicate properly with the laptop.



Most people select the standard (20 pts) method. You must select one and then click NEXT. The view on the SmartBoard will ask you to “Press Here” at the red letter X. Touch the RED X on the

SmartBoard (not the laptop) as prompted. When finished, the screen will return to the Orient Board window. You may exit the Orient Board window and begin using the laptop and the SmartBoard.

***You will be able to use the laptop to enter data as you normally do, or you may touch the SmartBoard to enter data and make selections.

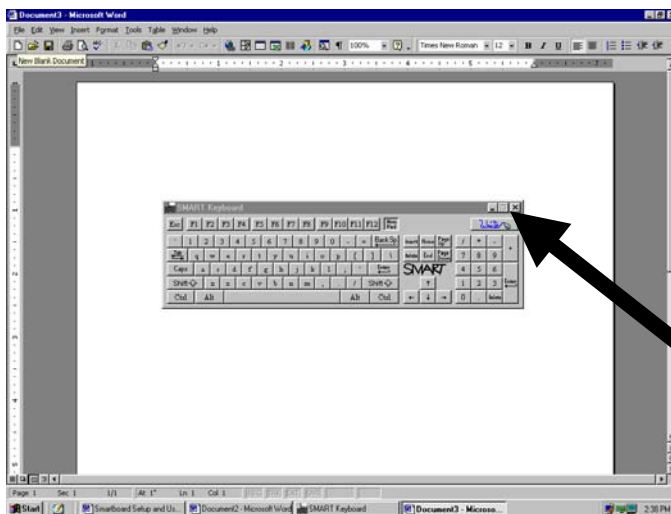
If you want to use the keyboard press the Keyboard button on the SmartBoard tray (located on the right side)



Keyboard button

Return to mouse button

The Keyboard will pop up a keyboard on the screen and you will be able to type by tapping the keys you want. If you prefer to use the stylus pens, tap on the key that indicates, “Write”



Select “Write” to use the stylus pens

When done writing or typing, you will need to select “Mouse” from the SmartBoard tray.

GOOD LUCK!!!!